

SAFE AND HEALTHY BUILDINGS

| Body Thermal Monitoring

Pro Mechanical Services can provide the tools necessary to help you create a safe and healthy workplace during the COVID-19 pandemic. According to the World Health Organization (WHO), COVID-19 affects different people in different ways. Most infected people will develop mild to moderate illness and recover without hospitalization. The most common symptoms according to the Centers for Disease Control and Prevention (CDC) are:

- Fever
- Cough
- Tiredness

There are several steps you should consider as you interact with the public in new ways: encourage wearing masks; social distancing and contact tracing; perform proactive temperature checks. The use of thermal cameras, thermal scanning and artificial intelligence software can assist with this.

THERMAL SCANNING MEASURES

- Perform a body scan of everyone entering the facility.
- Capture video and images of all activity.
- Leverage data analytics to make quick decisions.
- Develop a database to assist in contact tracing.

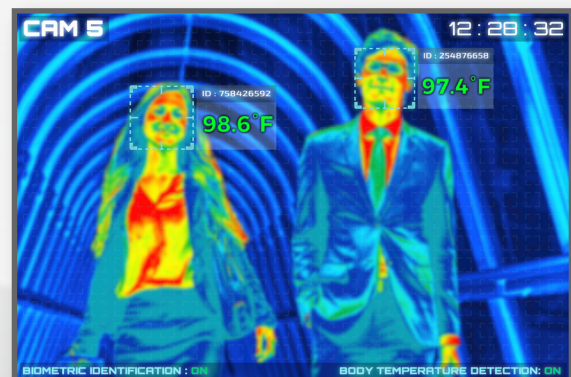


Thermal cameras can take high resolution images and video at a wide range of distances.

Thermal cameras cannot detect or diagnose coronavirus, yet cameras can be used as an adjunct to other body temperature screening tools for detecting elevated skin temperature in high-traffic, public places through quick individual screening. Thermal imaging cameras are more efficient than handheld thermometers. The U.S. Food & Drug Administration states, "when used correctly, thermal imaging systems generally have been shown to accurately measure someone's surface skin temperature without being physically close to the person being evaluated".

Additionally, thermal cameras can collect video and can assist in building security and building efficiency imaging. They can be a good tool to detect heat loss.

Pro Mechanical Services has been on the leading edge of using cameras for building security and controls automation for many years. We can bring our knowledge and expertise to this new application. Pro Mechanical Services can bring this new technology to your building.



Using powerful software and artificial intelligence, you can measure the human body temperature with no contact.

Body Thermal Imaging Applications

Thermal imaging is being used in buildings to screen employees and visitors for elevated or higher-than-expected skin temperatures, which can help guard against the spread of COVID-19. For applications in settings such as public buildings, hospitals, airports, schools, sports venues or manufacturing, cameras can be a first line of defense in managing the risks associated with a global pandemic. Thermal imaging cameras and software are used for initial screening to help detect people with signs of elevated skin temperature. Once identified, those individuals can be checked with a medical device to determine if they have a fever, one of the symptoms of a coronavirus or other flu infection.



Grocery



Shopping



Schools

Facilities of all types need to control the flow of traffic in and out and efficiently provide screening and tracing capabilities. Additionally, thermal cameras can support future security and maintenance applications.



Transportation



Financial Institutions



Office Buildings

BENEFITS OF THERMAL IMAGING SYSTEMS

- The person who handles the thermal imaging system is not required to be physically close to the person being evaluated.
- Thermal imaging systems may measure surface skin temperature faster than a typical forehead or oral thermometer.
- Scientific studies show that when used properly, thermal imaging systems generally measure surface skin temperature accurately.

ABOUT PRO MECHANICAL SERVICES

Since 1986, Pro Mechanical Services has remained true to our company's core mission and values of providing quality, innovative solutions for the commercial building industry. Our roots began as a full sheet metal and fabrication shop with construction and services, to now—more than 30 years later—serving the Inland Northwest as the premier mechanical contractor helping to shape the local landscape with buildings that operate in the most efficient manner possible through fully-integrated solutions for all size facilities.



ENABLING INTEGRATED FACILITIES SOLUTIONS
TO LEARN MORE VISIT PRO-MSI.COM

While Pro Mechanical Services strives to make the content of its marketing materials as timely and accurate as possible, Pro makes no claims, promises or guarantees about the accuracy, completeness or adequacy of, and expressly disclaims liability for errors and omissions in such materials. No warranty of any kind, implied, expressed or statutory, including but not limited to the warranties of non-infringement of third-party rights, title, merchantability, and fitness for a particular purpose, is given with respect to the content of these marketing materials. All rights reserved. 07.20

PO Box 6526 | 4911 N Rebecca
Spokane, WA 99217-0909
Phone: 509.483.1305
Fax: 509.483.1805
24 Hour Service: 509.455.3872